



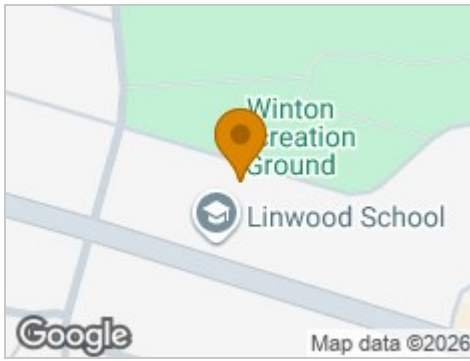
## 34A Fitzharris Avenue

, Bournemouth, BH9 1BZ

£1,200



## Road Map



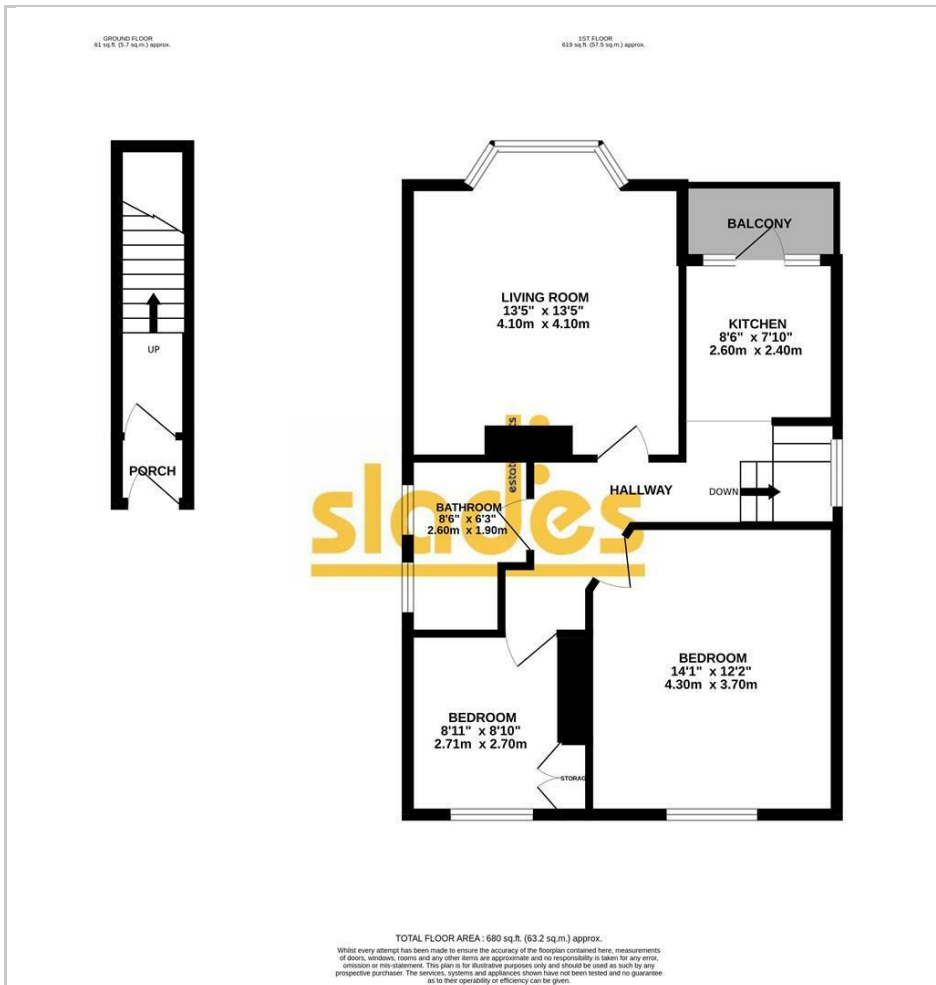
## Hybrid Map



## Terrain Map



## Floor Plan



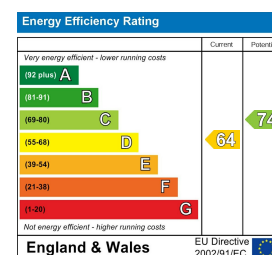
- FIRST FLOOR FLAT
- LARGE LIVING SPACE
- 2 DOUBLE BEDROOMS
- ALLOCATED PARKING SPACE
- OVERLOOKING WINTON REC
- SOUGH AFTER LOCATION
- FAMILY BATHROOM

## Viewing

Please contact our Slades Estate Agents Office on 01202548855 if you wish to arrange a viewing appointment for this property or require further information.



## Energy Efficiency Graph



These particulars, whilst believed to be accurate are set out as a general outline only for guidance and do not constitute any part of an offer or contract. Intending purchasers should not rely on them as statements of representation of fact, but must satisfy themselves by inspection or otherwise as to their accuracy. No person in this firm's employment has the authority to make or give any representation or warranty in respect of the property.

301 Wimborne Road, Bournemouth, BH9 2AA  
Tel: 01202548855 Email: info@sladesproperty.co.uk <https://www.sladesproperty.co.uk>

**A first-floor flat overlooking Winton Recreation Park. This spacious apartment offers two double bedrooms, a large living area, and allocated parking. Situated in a highly sought-after location. Available from 15/04/26.**





